

SET
CONSORTIUM
TELECOMMUNICATION
ELECTRONIC SERVICE

PZT - INWESTEL S.A. COMPTES S.C. TELBUD S.A.



Knowledge and experience of PZT Inwestel Co., Comptest C.P. and Telbud Co. allowed to create professional telecommunication electronic service. The companies concluded Consortium agreement to perform service repairs of electronic telecommunication equipment. Company PZT Inwestel Co. became a leader of Consortium.

**MCUD MCUE MCUG MCUA DTUE
DTUA DTUE DIAA TCPB TERA**

DTRE DTRH DTRF DTRI

**RCCA RCCB RCCC RCLA RCLK CLTD
CCLA CCLE**

**ALCB ISTB ISTC ISTA ALCN ALCNV
RNGA RNGF**

**MMCA MMCB AMEA RLMA RLMC
SWCH CLMA SLTA DSPA**

**DC25B DC25A DC27B CON27A CON28A
CONV3AW CONV8A CONV9A CONV25A
CONV25B CONV26A CONV27A CONV27B**



PZT-INWESTEL S.A.
ul. Płowiecka 105/107
04-501 Warszawa

tel. 022 327 62 00
fax 022 812 54 70

www.inwestel.com.pl

Comptest

COMPTES^T s.c.
ul. Krauthofera 23
60-203 Poznan

tel. 061 866 84 40
fax 061 866 88 49

www.comptest.com.pl



TELBU^D S.A.
ul. Krauthofera 23
60-203 Poznan

tel. 061 866 88 48
fax 061 866 84 40

www.telbud.pl





PZT Inwestel Co. has been established in 1992. Currently PZT Inwestel offers:

- designing and installation of telecommunication networks, IT and telecommunication systems
- installation and testing of equipment for systems: SDH, DWDM, switching, radiolink and cellular phones

- building towers and masts for installation of wireless equipment

The company owns PCBC Certificate of Quality Management System ISO 9110:2006 and Certificate AQAP 2110:2006 for our services, which is certifying fulfilment of our Quality Management System conditions of NATO requirements about quality of designing and production works. Our technical staff is a professional and well trained group of specialists with experience and specialist licences in telecommunication.

The logo for Comptest features the word "Comptest" in a white, serif font, centered within a dark blue rectangular background.

Comptest Civil Partnership was established in 1997. Comptest provides service for the control and measuring devices.

We also provide service for electronic subscriber exchanges Alcatel 1000-S12 and others.

We are experienced in servicing and installation technologically advanced electronic devices. We also deal with:

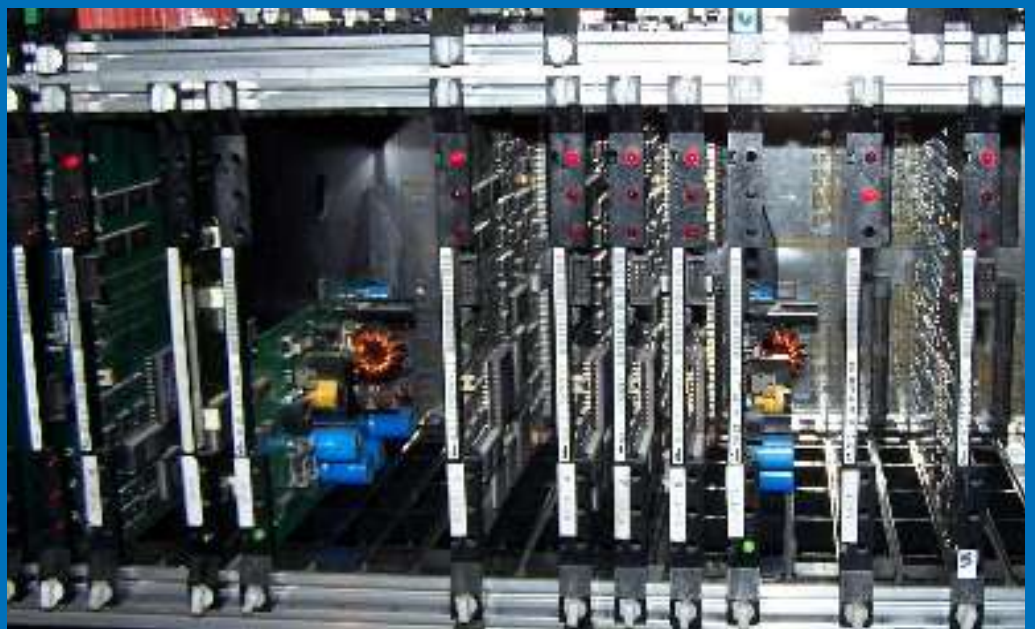
1. retail and wholesale of the PC computers, displays, printers, software and other computer equipment,
2. designing and managing building works with specialisation in the wire telecommunication with infrastructure.
3. Safety measurements in industrial buildings.



PT "TEL BUD" Co. was established in 1987. The Company pursue business activity in design and construction works in the area of telecommunication, automation, IT, elektrotechnics and also in environmental protection and green power. Most of workers had many years of experience and they are licensed for design and construction work.

TEL BUD accomplish services especially in:

- telephone networks and installation,
- supervision and control systems, city monitoring and CCTV of diverse objects,
- automation and security of buildings, fire protection, burglary and holdup prevention,
- cable television networks and HFC networks with access to multimedia services,
- radio access networks.



Service line is situated in the Centre of Boards Repair S 12 in Poznan, and has been created for repair of Alcatel S12 exchange and transmission systems SDH as well. The line is equipped in:

I.Repair stands of subscriber boards „ELC”

- 1.Tester ATG-2013-7
- 2.Integrated tester CTS-02-02

II.Stands to subscriber boards repair „J”

- 1.Functional tester subscriber pcbs SCHLUMBERGER T-0075
- 2.Integrated tester CTS-01-08
- 3.Tester ATG 3002

III.Stands to control boards repair „ELC”

- 1.Tester MAA-14-1
- 2.Integrated tester CTS-01-04

IV.Stands to control boards repair „J”

- 1.Tester MAA-14-2
- 2.Integrated tester CTS-01-02
- 3.Integrated tester CTS-01-03

V.Stands to converters repair

- 1.Tester ATG-2012-7

VI.Tester to control and clock plate measurement

- 1.Integrated tester CTS-01-06
- 2.Integrated tester CTS-01-05

VII.Tester to uplift concentrator boards „ELC”

- 1.Integrated tester CTS-02-06
- 2.Integrated tester CTS-02-07

VIII.Tester to uplift concentrator boards „J”

- 1.Integrated tester CTS-01-04
- 2.Integrated tester CTS-02-04

IX.Tester to repair of optical disk service boards

- 1.Integrated tester CTS-01-07

X.Tester to packs repair

Tester aided to repair of control and clock boards measurement.

- 1.Tester ATG 3002
- 2.Tester ATG 3005
- 3.Tester ATG 3006

XI.The Telephone exchange model



**WELCOME TO
COOPERATION**